



Forensics & Investigation Tool

**Ranging 50 to 100 meters, and even farther.
Wiretap Computer 802.11 a/b/g Wireless LAN or
Network Transmission**

Decrypt ...E-mail, Hotmail, Webmail, MSN/ICQ/AOL/Yahoo, FTP, VOIP, ORL Browsing...etc.



Different with normal Sniffer, it can record session then decode and recombine packets to reproduce the original file. If there's common WEP key encrypted wireless transmission, Wireless-Detective can offer WEP decryption function for you. Wireless-Detective can decrypt the WEP key of the length of 64, 128, 256 bits or the special defined WEP key and can also decrypt part of WPA encryption.

A Special Device for Detective and Investigator

The Most Advanced, Smallest System in the World

802.11 a/b/g Computer Wireless Network Forensic System

《We are designer and Manufacturer, welcome Project Design, OEM, and ODM》



DECISION COMPUTER INTERNATIONAL CO., LTD.

Address : 4/F No. 31, Alley 4, Lane 36, Sec.5, Ming-Shen East Road Taipei, Taiwan

Phone No : +886 2 2766-5753

Cell Phone: +886 933 941831

Fax No : +886 2 2766 5702

E - Mail : decision@ms1.hinet.net

URL: www.edecision4u.com/forensics.html

Contact: Casper / Managing Director

Functions and Operation Modes

Wireless-Detective 802.11 a/b/g Wireless LAN Detector & Sniffer Module

The primary feature of this module is to detect all 802.11 Wireless LAN communications within the area that this detector can work, and detect any Access Point and station (STA) within its covering area. Furthermore, this detector can combine with Global Positioning System (GPS) and locate the approximate geographic location of detected APs or STAs through electronic map. For more accurate position of STA or AP, the user may connect three E-Detective Wireless detectors with networking connection, high-sensitivity antenna and signal amplifier to calculate the location of the sniffed object through triangulation, and the accuracy can be improved into less 10 meters. The effective area of remote sniffing depends on the weather, terrain and interference. The farthest distance of sniffing can be reached into 2 to 4 kilometers, even 5 kilometer. But the utmost distance couldn't be over 10 kilometers because of the curvature of earth.

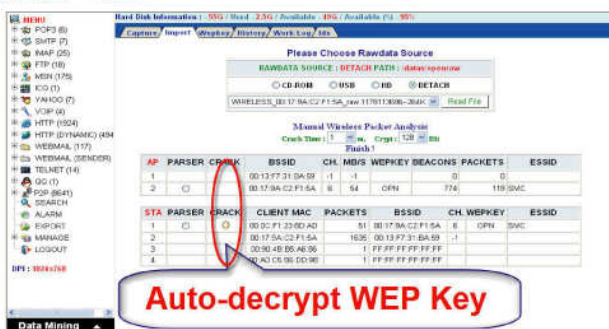
For the completion of sniffing, the sniffer can be configured into the following configurations and functions:

The information of detectable Wireless LAN AP includes: The information of detectable Station (STA) includes:

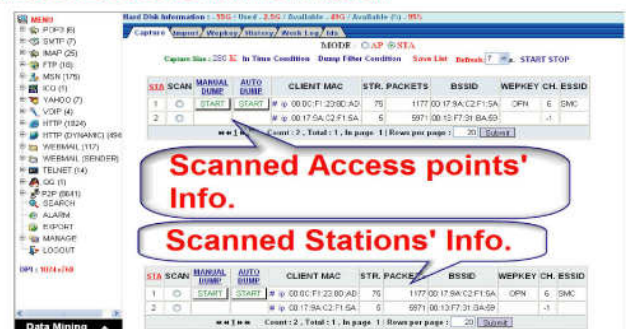
1. BSSID of AP (MAC address)
 2. Channel
 3. The number of STAs
 4. The number of encrypted packet
 5. The number of data packet
 6. Additional information of AP (the manufacturer of AP, the manufacturer of AP IC component has to be authenticated through international registration)
 7. Noise level and signal level
 8. SSID or ESSID
 9. Type of Wireless LAN: Probe, Ad-hoc or Infra
 10. WEP (wired equivalent privacy protocol) status
 11. The amount of transferring Wireless LAN packet
1. The number of encrypted packet through this STA
 2. The number of packet through this STA
 3. IP Address of STA
 4. MAC Address of STA
 5. The manufacturer of STA (the one has been authenticated)
 6. The highest transferring rate of STA
 7. Noise level and signal level of STA
 8. Type of STA (Established, To-DS or From-DS)

Wireless-Detective Systemized Functions :

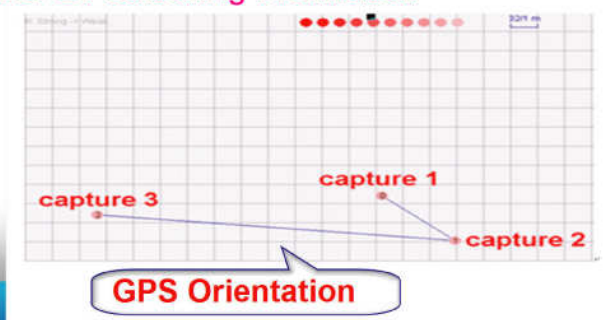
A.WEP KEY



B.BSSID & Client information



C.GPS Positioning Information



D.Sniff Specific Target



In different with normal sniffer, it can decode and recombine packets of session then reproduce the original file of every protocol, Wireless-Detective reveal the contents of network transmission like e-mail, IM, Web browsing, FTP upload and download, Telnet, P2P, On-Line Game...etc.

Decode and Recover Packets of Different Modes

1. POP3/SMTP/Web/Mail

Detailed Record:

1. Sender/Receiver
2. Account, Pass
3. Attached Files
4. Email Content,...etc.

2. URL Browsing

Browsed Website Content, IP,...etc.

3. IM-MSN, ICQ, YAHOO, QQ

Date/Time, IP, Account, Messages Transferred Files,...etc.

4. Telnet

Date/Time, Account, Pass, IP, Browsed Process,...etc.

5. FTP

Date/Time, IP, Port, Transfer Tool, Transferred File Name,...etc.

6. P2P

Date/Time, IP, Port, Transfer Tool, Transferred File Name,...etc.

7. On-Line Game

Date/Time, IP, Port, Game Name, ...etc.

8. VOIP & Webcam

Click to hear/view records.

Omnibearing content recovering and forensic function, make information reveal completely.

Solidified Technics Helps Tackle Your WLAN Communications

Wireless-Detective Network Forensic Operation Models

A. Single Device Operation



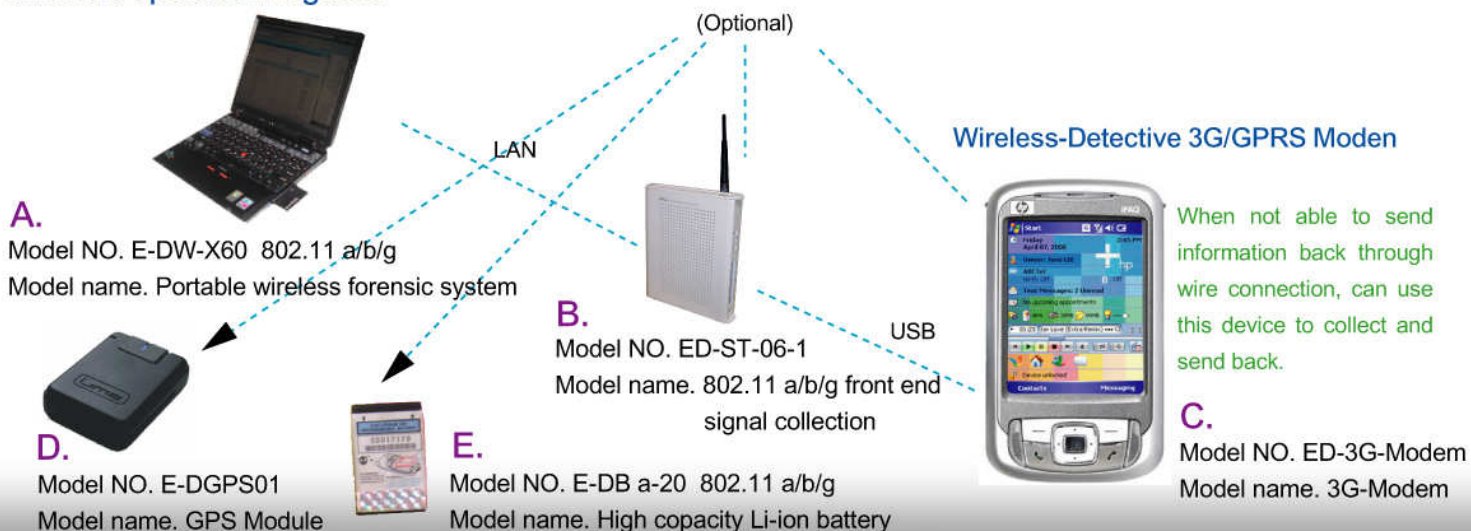
B. Front and Back and Operation Model



C. Remote site Detecting Model



Wireless-Detective network forensic devices offer various models and options for customer base on different operation request



Wireless-Detective Leading Technologies Make Everything Under Your Control.
Decision's R&D Team Create Innovative Technologies For You